

26kg NG Hi-Flow Regulator

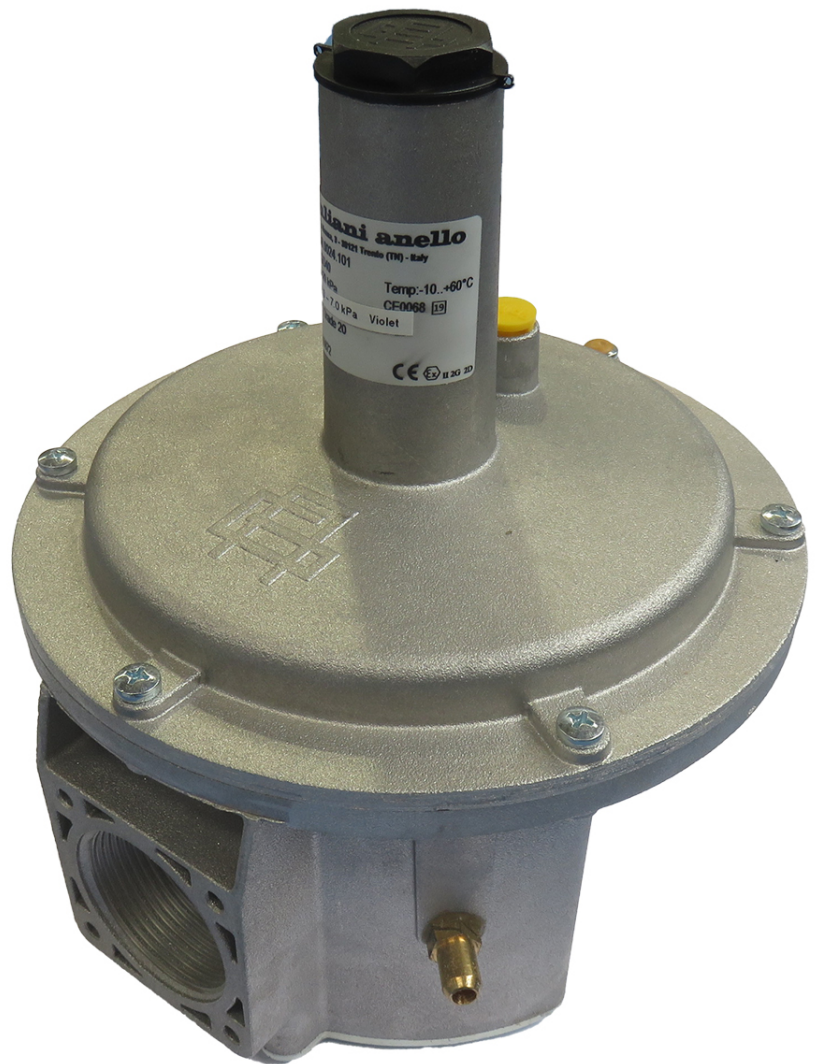
RGFGD40/CE

Application:

Suitable for domestic and commercial applications.

Specifications:

- Adjustable
- Inlet Size: 1 1/2"
- Outlet Size: 1 1/2"
- Inlet Pressure: 20 kPa
- Outlet Pressure: 2.5-8 kPa
- 26kg's p/hr
- 1300MJ
- CE certified to EN88 specification



Where would we be without Gas?